



IN-PLAN

Integrated energy, climate and spatial planning

LIFE-CET-LOCAL

Tomislav Novosel

REGEA



Co-funded by the European Union under project ID101076428. Views and opinions expressed are however those of the author(s) only and do not necessarily reflect those of the European Union or CINEA. Neither the European Union nor the granting authority can be held responsible for them.

Challenges



Lack of capacity and mechanisms to enact and enforce binding energy and climate policies on a local or regional level



Lack of vertical and horizontal integration or alignment of strategies, plans, and policies

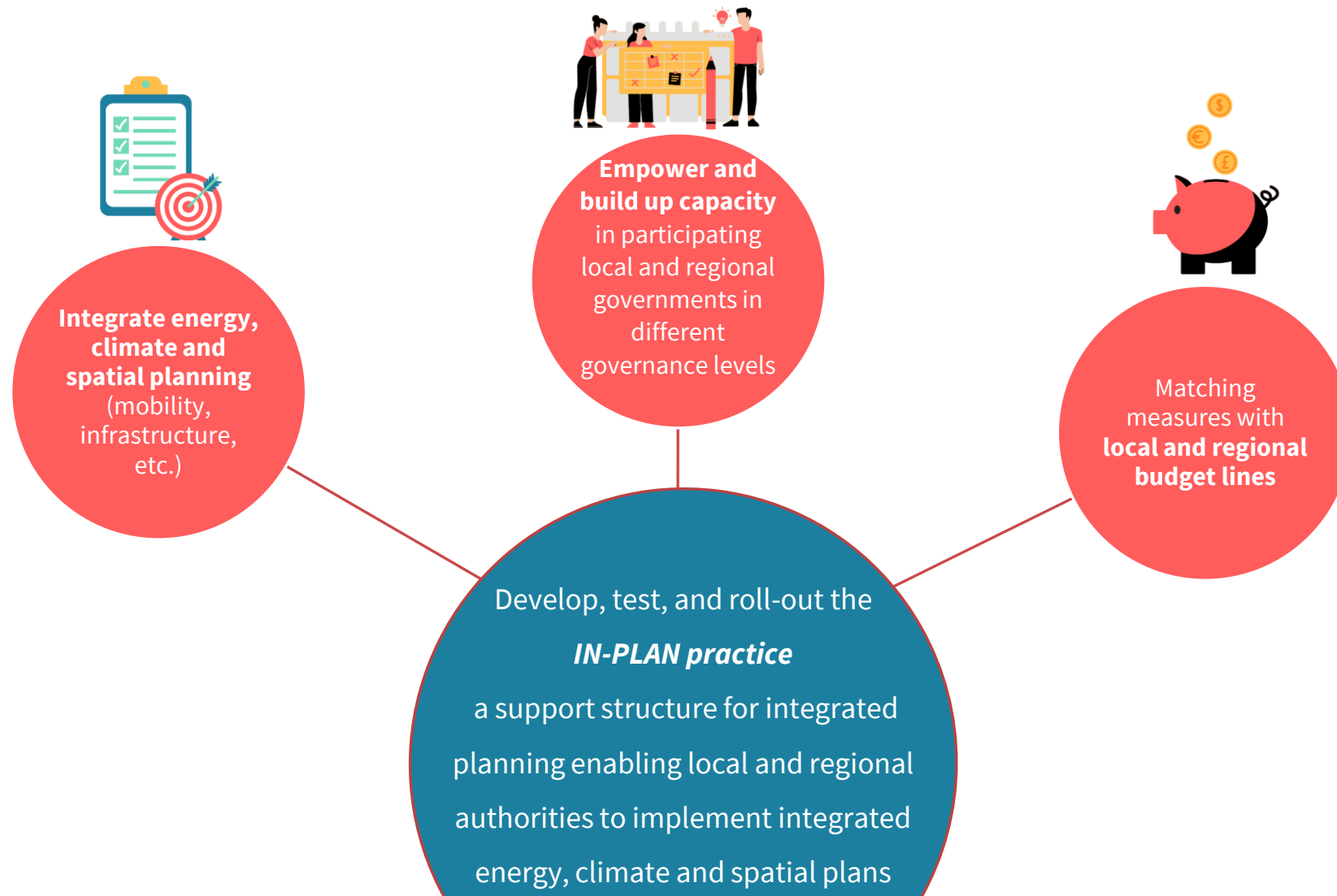


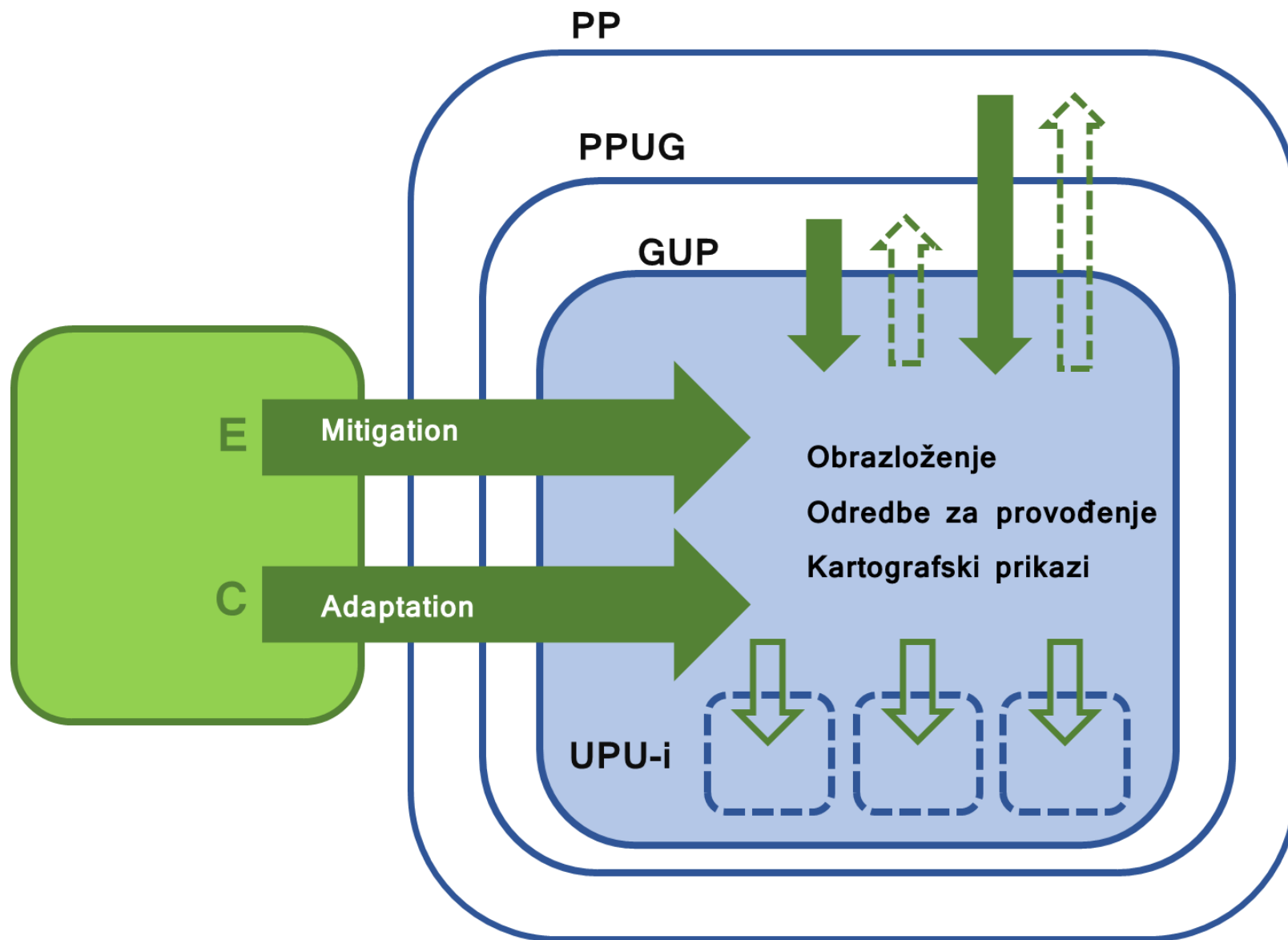
Lack of a systemic, integrated, and consistent approach to energy and climate planning



Lack of alignment between planning and the allocation of financial resources

IN-PLAN objectives





IN-PLAN partners

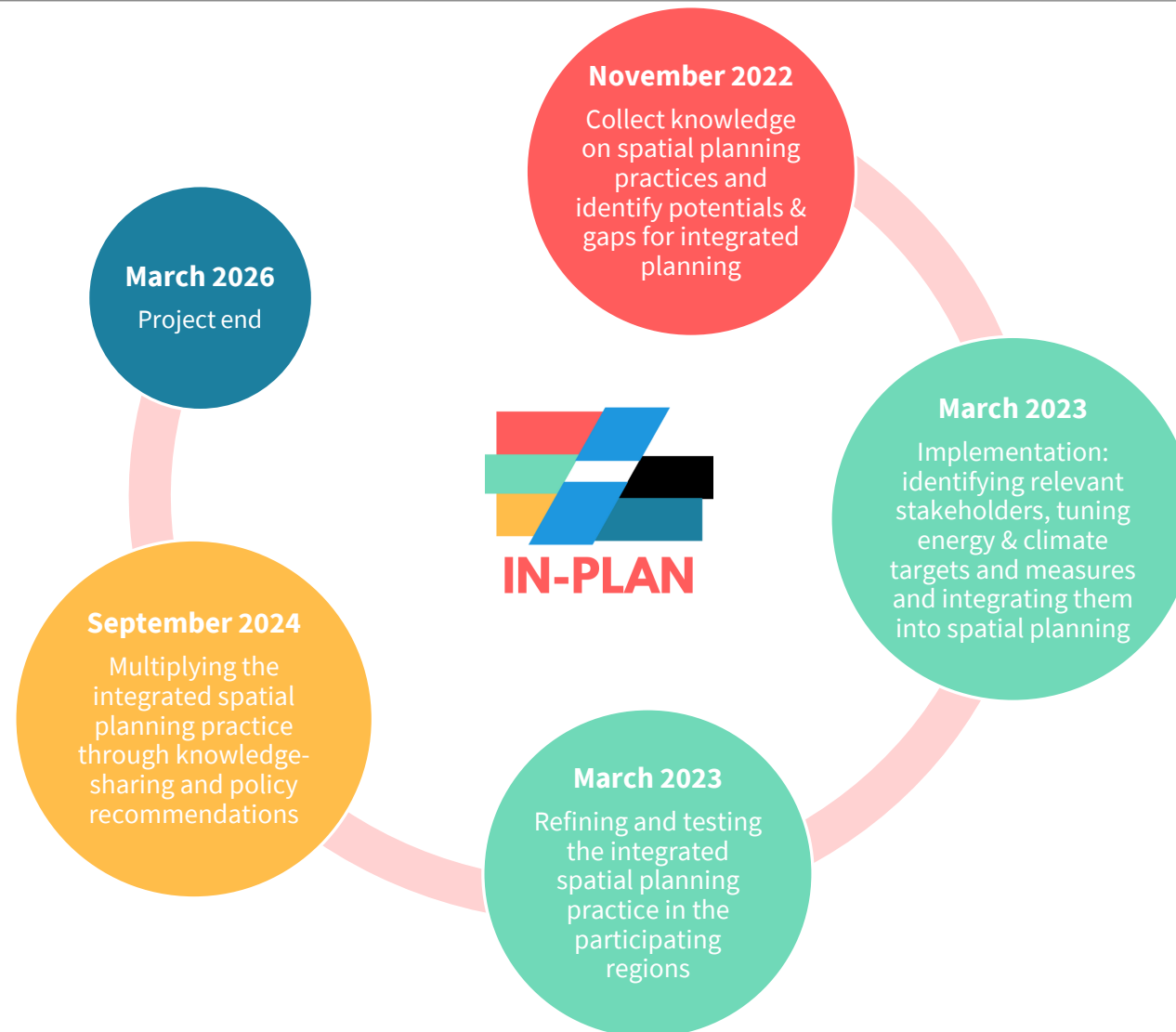


IN-PLAN scope

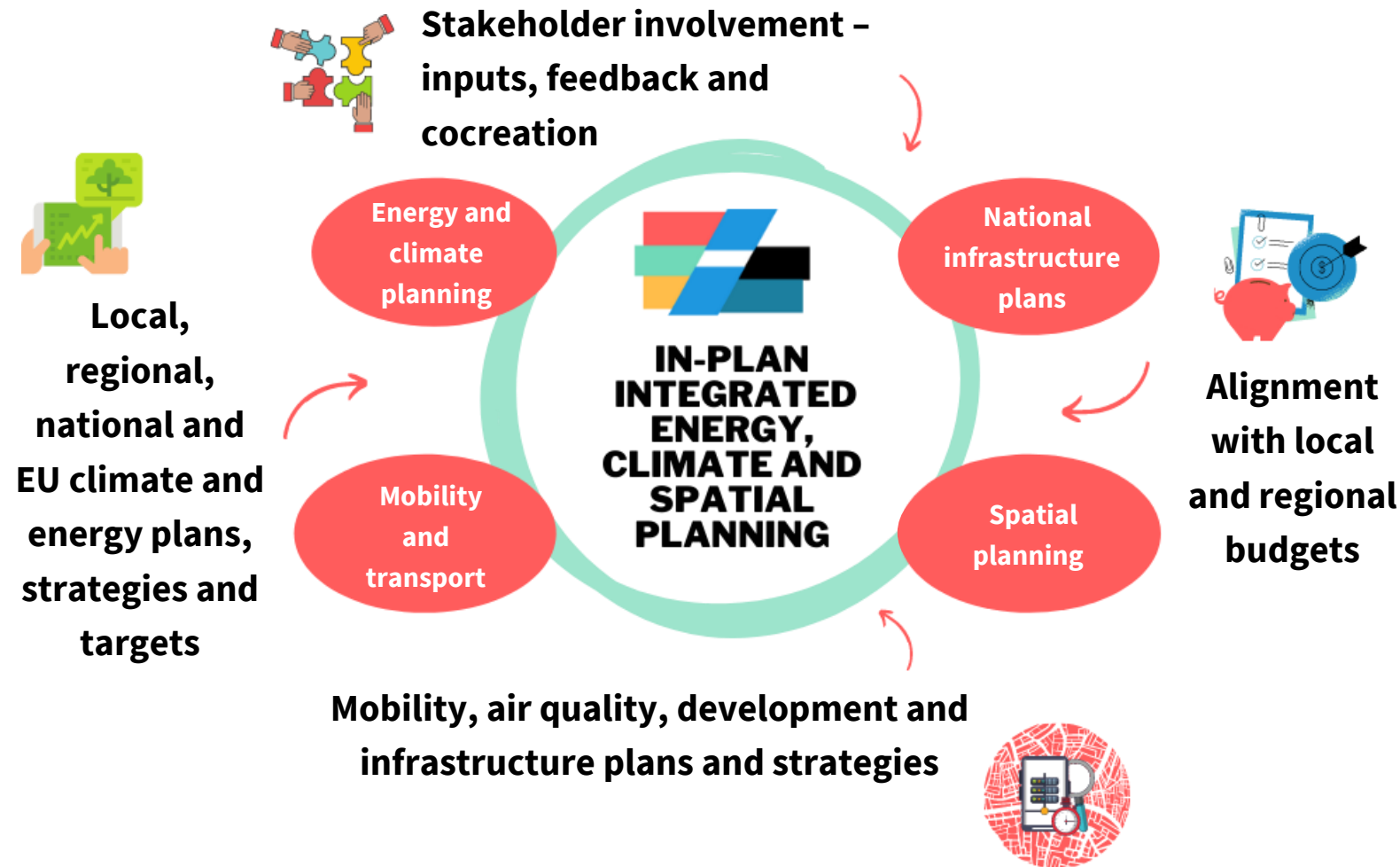
The LIFE project intends to develop and tests **the IN- PLAN practice in 5 pilot countries**, to then roll it out to other EU MS and regions through a two-stage capacity building programme.



IN-PLAN timeline



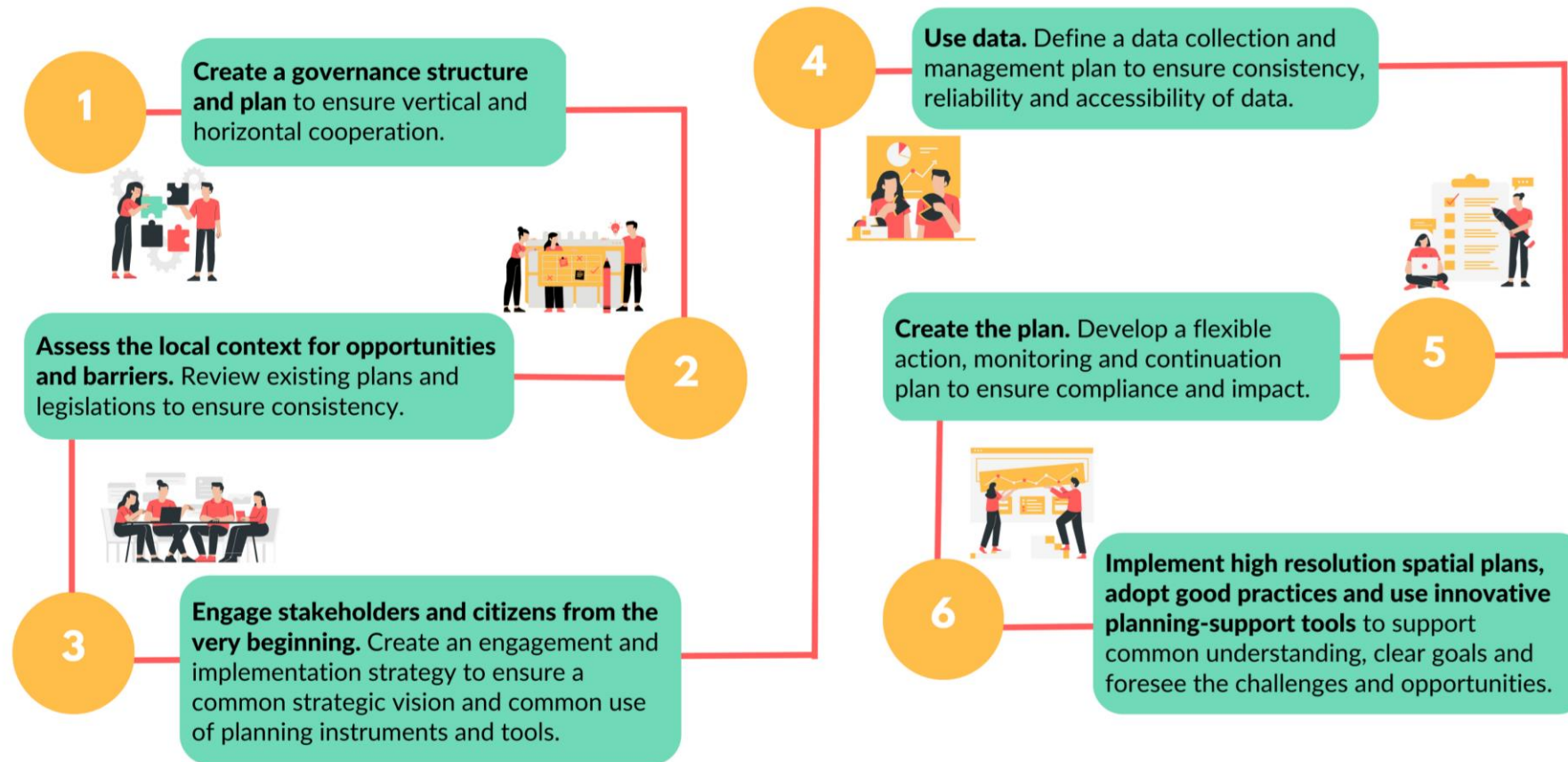
IN-PLAN impacts



IN-PLAN impacts



6 key steps for local authorities and urban planners to implement a successful integrated planning approach





Thank you.

For more info, follow our hashtag, visit our website or contact us:



#LifeINPLAN



fedarene.org/project/in-plan/



tnovosel@regea.org



Co-funded by the European Union under project ID 101076428. Views and opinions expressed are however those of the author(s) only and do not necessarily reflect those of the European Union or CINEA. Neither the European Union nor the granting authority can be held responsible for them.